

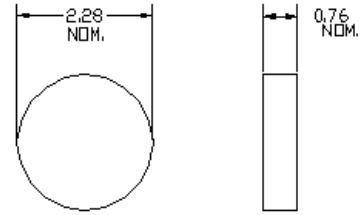


Description

Chromium oxide ceramic based thermistor

Features

Temperature Range: -40 to 1000°C



DIMENSIONS ARE IN MILLIMETERS
(NOT TO SCALE)

R/T TABLE	
Temp	Resistance
-50	8,088,595
-25	1,493,572
0	441,126
25	172,518
50	80,728
75	42,666
100	24,602
125	15,144
150	9,808
175	6,619
200	4,621
225	3,319
250	2,444
275	1,839
300	1,410
325	1,100
350	871.2
375	699.5
400	568.7
425	467.6
450	388.6
475	326.0
500	275.9
525	235.5
550	202.5
575	175.3
600	152.8
625	134.0
650	118.2
675	104.8
700	93.42
725	83.65
750	75.23
775	67.94
800	61.60
825	56.06
850	51.19
875	46.91
900	43.11
925	39.74
950	36.74
975	34.05
1000	31.65



Chromium Oxide / Yttrium Chromite NTC R/T

